

# Paradigm OpsLink

## Paradigm OpsLink

Paradigm™ OpsLink™ is a client-server application that provides operating companies with the ability to make rapid and informed decisions while drilling to maximize productivity and minimize drilling costs. Fast and flexible access to real-time WITSML-based MWD and LWD data provides key information required by asset teams to make these decisions.

## Data Mapping

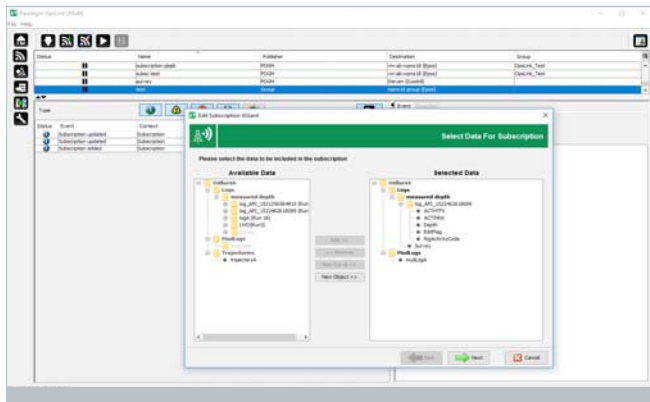
OpsLink provides a graphical representation of databases for mapping real-time data objects from a WITSML source to a specific data repository. It offers a view of both the source and destination data structures, enabling the source and target data objects to be easily identified and selected.

The OpsLink interface includes an Item Description panel that provides more detailed information about available data.

## Import & Subscriptions

The import mode enables data to be acquired from a WITSML file or a WITSML server as a one-time download. The subscription mode allows data to be acquired on a continuous update basis. Through a subscription, the user is able to control the frequency of updates to the data repository and specify whether existing data is to be replaced.

Once a subscription has been initiated, it usually requires no further user intervention.



▲ Setting up an OpsLink subscription to transfer WITSML log data to an Epos database



## Data Management

OpsLink can support multiple simultaneous subscriptions from multiple WITSML providers. Once defined, these subscriptions can be managed from a single subscription panel.

The OpsLink server runs as a background service and can be set to start automatically whenever the machine is active. An Event Manager provides detailed status information, allowing the user to monitor the status of current subscriptions.

OpsLink automatically handles loss of connectivity to a WITSML provider while a subscription is active.

## Databases

Paradigm users have the option to store data acquired by OpsLink in Paradigm data repositories, such as the Geolog™ well data repository or the Epos™ drilling database. It is also possible to populate third-party data repositories such as OpenWorks® and GeoFrame® using Epos data links.

## Features

- Support for WITSML, and Well, Wellbore, Wellbore Geometry, Trajectory, Log, Mud Log and Tubular objects
- Support for multiple simultaneous subscriptions from multiple WITSML providers
- An Event Manager providing detailed status information

## The Paradigm Advantage

- Enables timely, efficient and accurate data exchange between rig site acquisition systems and office-based software applications and data stores.
- Provides desktop users with real-time data in order to make decisions based on the latest available information.
- Enables real-time workflows in Geolog, Geolog Geosteer™ and SKUA-GOCAD™.



[www.emerson.com/paradigm](http://www.emerson.com/paradigm)

The Emerson logo is a trademark and service mark of Emerson Electric Co. Paradigm and/or other Paradigm products referenced herein are registered trademarks of one of the Emerson family of companies. All other marks are the property of their respective owners. © 2018 Emerson Electric Co. All rights reserved.