

E&P DAILY NEWS

2013 SEG Annual Meeting

OFFICIAL SHOW DAILY PUBLISHER OF THE SEG INTERNATIONAL EXPOSITION AND 83RD ANNUAL MEETING

Bringing Advanced Science to Everyone

Solution allows customers to unify critical workflows while connecting easily from and to existing systems.

By Indy Chakrabarti, Paradigm

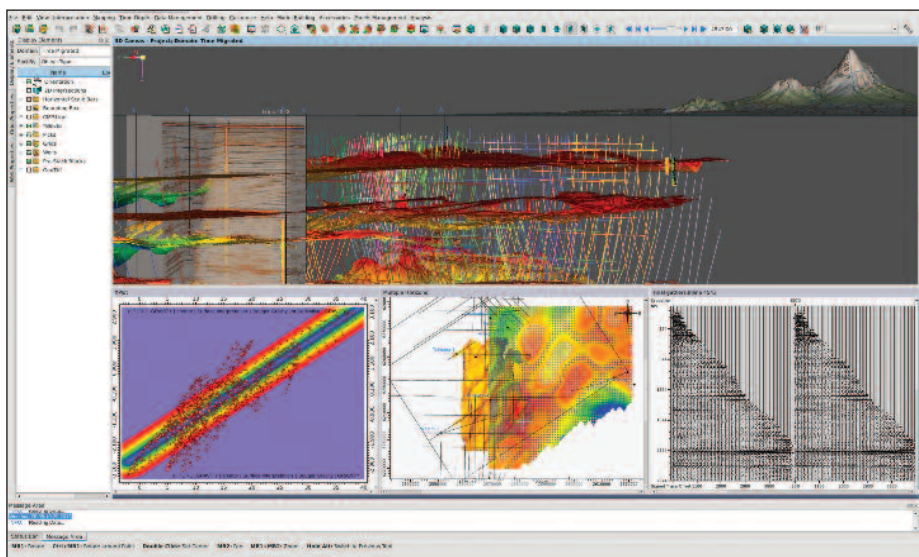
Deciding between “best-of-breed” and “integrated” software has long been a challenge in the E&P industry. When software vendors have attempted integration, it has typically meant customers have to completely uproot their existing solutions or limit themselves to a single primary provider. At the same time, choosing a “best-of-breed” approach has made collaboration across disciplines difficult. Processors, interpreters, modelers, and engineers either have data siloed in their applications of choice or must give up preferred tools and consolidate on a “good enough” but integrated option.

What organizations need is a third option — not best-of-breed or integrated but rather interconnected. This is the approach that Paradigm has traditionally taken, and that has now been extended to create the new Paradigm interconnected platform. This truly open solution allows customers to unify critical workflows into an integrated single console at both the application and database levels while still connecting easily from and to pre-existing systems. The Paradigm interconnected platform allows organizations to choose the right combination of best-of-breed solutions across vendors for each project.

Integration of applications

The platform unifies Paradigm’s suite of applications into a single integrated console. Paradigm applications are already integrated at the database level through Epos. Now, they also will share a common user interface, reducing the learning curve between applications and making information shareable in real time. In addition, the solution introduces the concept of custom workflow templates.

Organizations will be able to define and save common geoscientific procedures that can then be followed by asset teams, ensuring consistent evaluations for each resource type. Through this process, advanced reservoir characterization workflows that currently re-



The Paradigm interconnected platform unifies applications, data, and workflows in a single integrated console, with easy connection to and from third-party systems. (Image courtesy of Paradigm)

quire specialized expertise can be defined for use by generalist user communities, bringing advanced science to everyone.

Co-existence with third-party applications

The new platform will ensure interconnectivity among third-party applications that is unprecedented in the industry. Developers will be able to integrate their applications into the Paradigm platform without ongoing royalties using either an application-level plug-in or the underlying Epos database. Developers connecting into the platform will be free to build similar plug-ins for any other vendor. Dozens of third-party modules are expected to be available at launch.

Although the architecture readily permits third-party connectors, the solution does not require customers to consolidate on Paradigm. Rather, they will be able to select the Paradigm components they need to connect into their existing primary platform. Since these are fully developed solutions, there will be no compromise on the science that is made available. No existing solution provides customers with this kind of flexibility and openness.

Corporate repository, open database

The architecture will support the first truly open database for E&P data. The lack of a uniform database of this kind has long been a major challenge for E&P operators. The Paradigm interconnected platform will provide a RDBMS that conforms to Energistics platform-neutral standards such as RESQML and WITSML as well as PPDm and SEG-Y. Third-party vendors who adopt these open standards will be able

to share this corporate repository. Adhering to these modern data standards will allow customers to use applications of their choosing while maintaining a single data management infrastructure. According to Paradigm, this will simplify long-term data storage, project management, authoritative version management, data governance, and knowledge management.

Incremental upgrade

Moreover, existing customers will be able to access the Paradigm interconnected platform and its open database with a minimally disruptive in-place upgrade. The solution can run on the current Epos database while transitioning to the open database in stages. Application integration and interconnectivity occur as extensions to existing products rather than requiring the adoption of new systems. The solution will roll out in phases, beginning with the Paradigm 2014 release available in the 4Q 2013. The company will unveil the Paradigm interconnected platform at SEG, along with the new product name, at 3 p.m. on Sept. 23 at booth 2842. Live demonstrations of the technology will also be shown throughout the show at the Paradigm booth. ■